

Briton

AH500 Series Hinges



The AH500 series hinges are designed to meet the highest security standards and are certified to ANSI A156.1. This certification ensures that the hinges have undergone rigorous testing, including a stringent 1,500,000 cyclic test.

In addition to the cyclic tests, the AH500 Series hinges is also built to withstand challenging environmental conditions since they undergone a thorough performance test, including a 200-hour salt-spray test.

With their certification and rigorous durability testing, the AH500 series hinges provide exceptional durability you can trust for your applications.

Features

- **Comply to the highest security standards** - Certified ANSI A156.1 Grade 2 (2 bearings model) standards
- **Exceptional Durability in Harsh Environment** - Manufactured with premium 304 stainless steel material and tested to a 200-hour salt-spray test.
- **Convenient Installation** - Each set of hinges is supplied with 8 pieces of machine screws and 8 pieces of wood screws by default
- **Versatile Sizing Options** - Various sizes are available to accommodate different project requirements

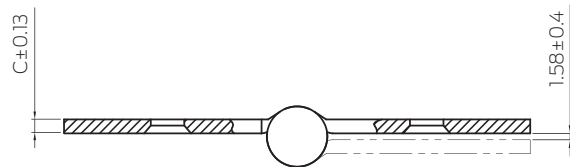
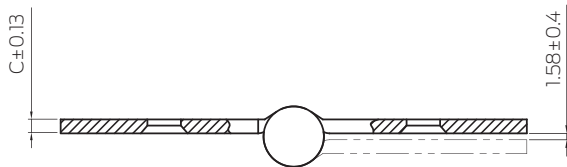
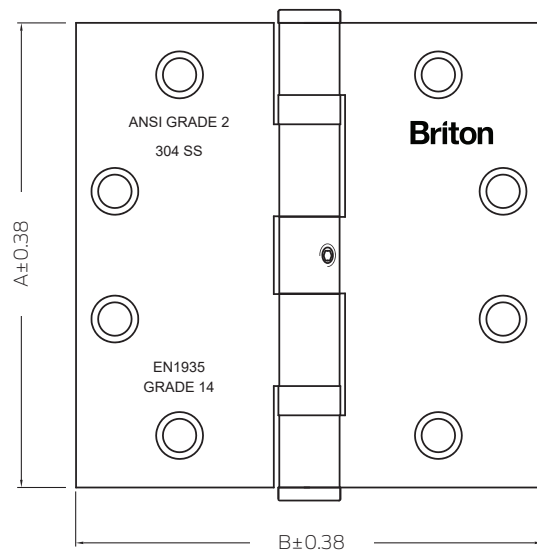
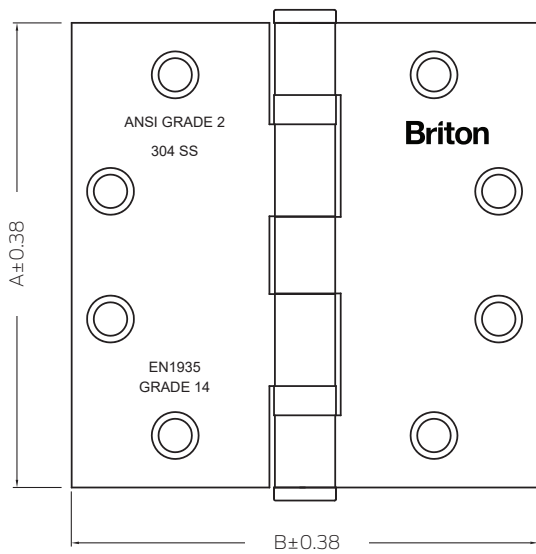
Technical specifications

Model	AH500 Series	
Door Weight	Up to 120kg	
Handing	Non-handed	
Opening angle	270°	
Material	304 Stainless Steel	
Finishes	629 (Bright Stainless Steel) / 630 (Satin Stainless Steel)	
Removable Pin	Removable / non-removable pin are available	
Compliance	ANSI A156.1	
Ball Bearing	2-ball bearing	
ANSI Grade	ANSI grade 2	
Durability (Cyclic Performance)	1,500,000 cycles	
Corrosion	200 hours salt-spray test	
Dimensions (A / B / C)	Imperial Units (")	Metric Units (mm)
	4.5 / 4 / 0.134 4.5" / 4.5" / 0.134 5" / 4.5" / 0.146 5" / 5" / 0.146	114.3 / 101.6 / 3.4 114.3 / 114.3 / 3.4 127 / 114.3 / 3.7 127 / 127 / 3.7

Dimensions

AH500 series hinge, 2 ball bearings

AH500 series hinge, 2 ball bearings, with non-removable pin



All measurements in the dimensional drawings are in mm.