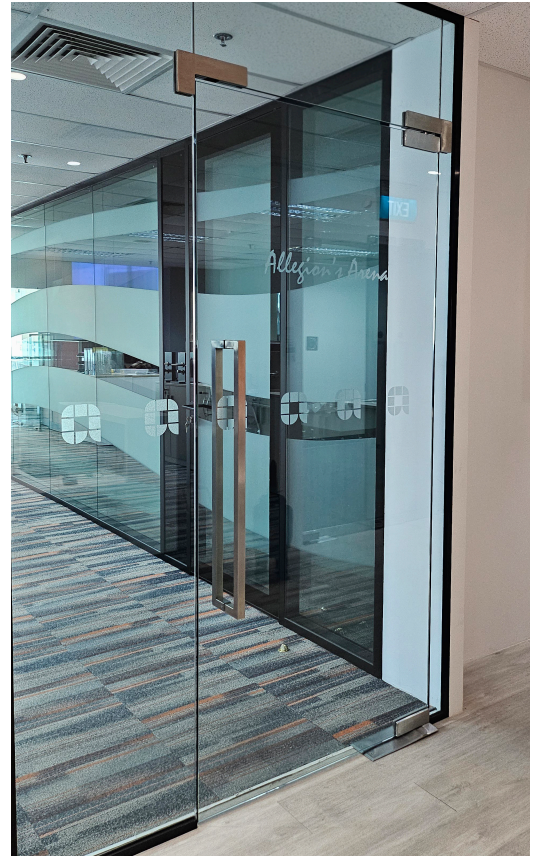




Glass Door Patch Fittings & Accessories

These fittings are designed to work seamlessly with any tempered glass door leaf, adding a touch of elegance to your glass door profile. The patch fittings and accessories accommodate door thicknesses ranging from 12mm to 15mm and can support door weights of up to 150kg. Furthermore, the simplified design of the patch fittings ensures quick and easy glass preparation for installers, making them suitable for a wide range of glass door applications.



Warranties

Mechanical	International Warranty*
------------	-------------------------

*Please refer to the International Warranty agreement.

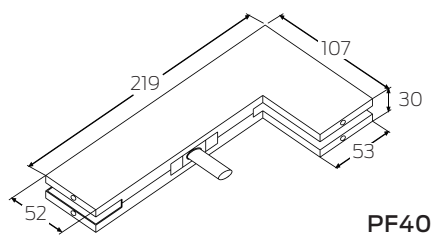


Technical specifications

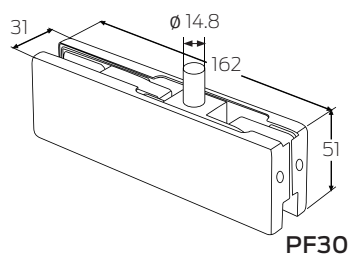
Model	Application	Brush Stainless Steel	Polished Stainless Steel	Max Door Thickness (mm)	Max Weight (kg)
PF10 - 12	Bottom Patch	✓	✓	12	150
PF20 - 12	Top Patch	✓	✓	12	150
PF30 - 12	Corner Patch	✓	✓	12	150
PF30P - 12	Corner Patch with Side Mount	✓	✓	12	150
PF40 - 12	L-Shape Patch		✓	12	150
PL10 - 12	Patch Lock	✓	✓	12	150
PF10 - 15	Bottom Patch	✓	✓	15	150
PF20 - 15	Top Patch	✓	✓	15	150
PF30 - 15	Corner Patch	✓	✓	15	150
PF30P - 15	Corner Patch with Side Mount	✓	✓	15	150
PF40 - 15	L-Shape Patch	✓	✓	15	150
PL10 - 15	Patch Lock	✓	✓	15	150

We offer patch fittings that can be customized to fit door thicknesses that are not listed above. Simply make a request for the specific door thickness you need.

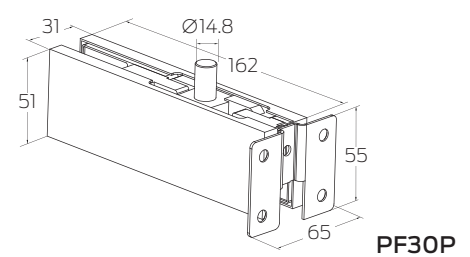
Dimensions



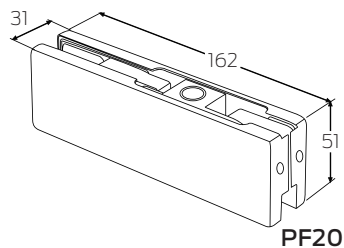
PF40



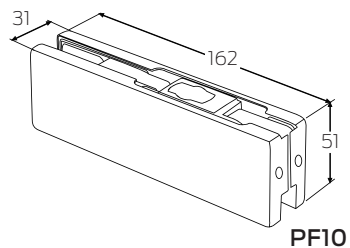
PF30



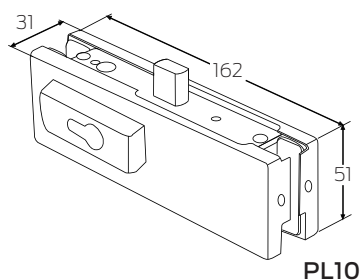
PF30P



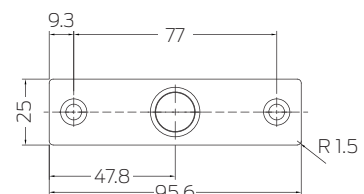
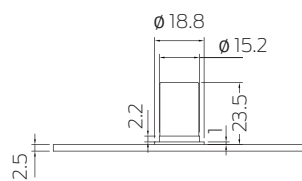
PF20



PF10



PL10



PT24

All measurements are in mm.