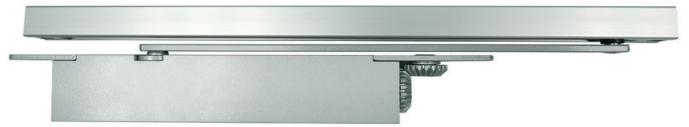


Briton

C3024 Series CONCEALED DOOR CLOSER



The Briton C3024 is a precision-manufactured cam-action, concealed door closer. The closer body is mounted within the top of the door, while the slide track is located within the head frame. This design not only provides high resistance to abuse but also offers a highly aesthetic solution as it remains fully concealed when the door is closed.

The C3024 is available in EN sizes 2-4, making it suitable for most types of doors in the market.

Features

- Adjustable EN size 2-4
- Suitable for door widths up to 1100mm
- Maximum door weight tested up to 130kg
- Non-handed solution
- Concealed solution to help achieve a sleek door profile
- Vandalism-resistant
- Adjustable closing and latching speed
- Incorporates cam-action technology, which is an efficient mechanism that reduces resistance when opening the door.
- Backcheck prevents over swinging
- Complies to the highest international standards
- Tested to 500,000 cycles

Warranties

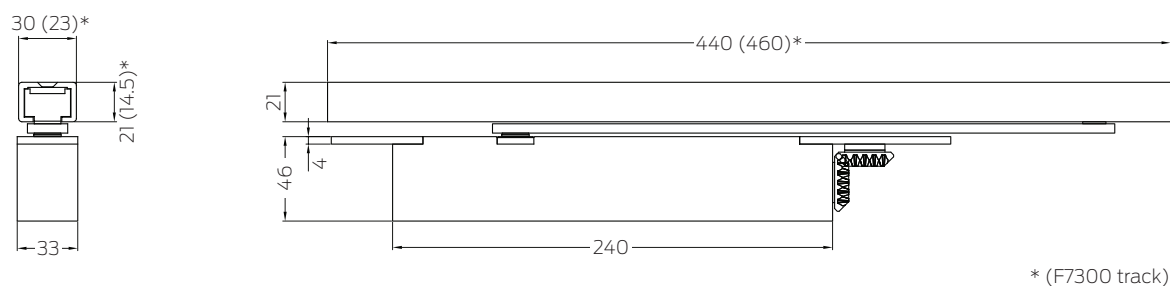
Mechanical	International Warranty*
------------	-------------------------

*Please refer to the International Warranty agreement.

Technical specifications

Model	C3024
Closing force according to EN1154	EN 2-4
Adjustable closing force	Yes
Max. door width	1100mm
Max. door weight	130kg
Adjustable closing speed	120° - 15°
Adjustable latching speed	15° - 0°
Arm Type	Guide Rail
Hold Open	Yes (optional)
Max. Opening Angle (Hinge Side)	120°
Max. Opening Angle (Opp. Hinge Side)	-
Max. Opening Angle (Others)	-
Back Check	Yes
Delay Action	-
Handling	Non-Handed
Compliance	EN1154:1996 ANSI A156.4:2019

Dimensions



(Dimensions for F7300 track)*
All measurements are in mm.